



Official statistics on risk assessment
in German child protection services
15th ISPCAN European Conference on Child Abuse & Neglect
The Hague, Netherlands
1 October 2017



Dr. Jens Pothmann

Gudula Kaufhold

Forschungsverbund



Deutsches Jugendinstitut
Technische Universität Dortmund

Structure



1. Background: Procedure in case of (suspected) child endangerment in Germany
2. The statistical reporting Form for the „8a-Statistics“
3. Core Results of the „8a-Statistics“
 - ▶ Prevalence of risk assessments in youth welfare agencies
 - ▶ Age of the children concerned
 - ▶ Notifiers of the potential risk
 - ▶ Outcomes of the risk assessments
 - ▶ Form of maltreatment
 - ▶ Support services following



1. Background procedure in case of (suspected) child endangerment in Germany



- Several child maltreatment deaths since the late 1990s and their reception in the media set child and youth welfare and politics massively under pressure.
- Introduction of section 8a of Social Code Book VIII (Child and Youth Welfare) in 2005.
- Sec. 8a Social Code Book defines the threshold for the duty to take action and regulates procedural steps for the statutory services.
- Since 2012 data on risk assessments under sec. 8a conducted by the youth welfare agencies are reported to the statistical offices.
- Now data from four census years are available.



2. The statistical reporting form for the „8a-Statistics“

Part A age and sex of the child

Part B age of the child's natural or adoptive parents

Part C the child's habitual residence

Part D person, agency or institution who/which informed the welfare agency

Part E support services at the time the risk assessment was conducted

Part F overall evaluation of the risk situation,
the form of maltreatment,
newly implemented support services

Part G communication with the court



3. Core Results of the „8a-Statistics“

➤ Prevalence of risk assessments in youth welfare agencies

2015: 129.485 risk assessments in youth welfare agencies

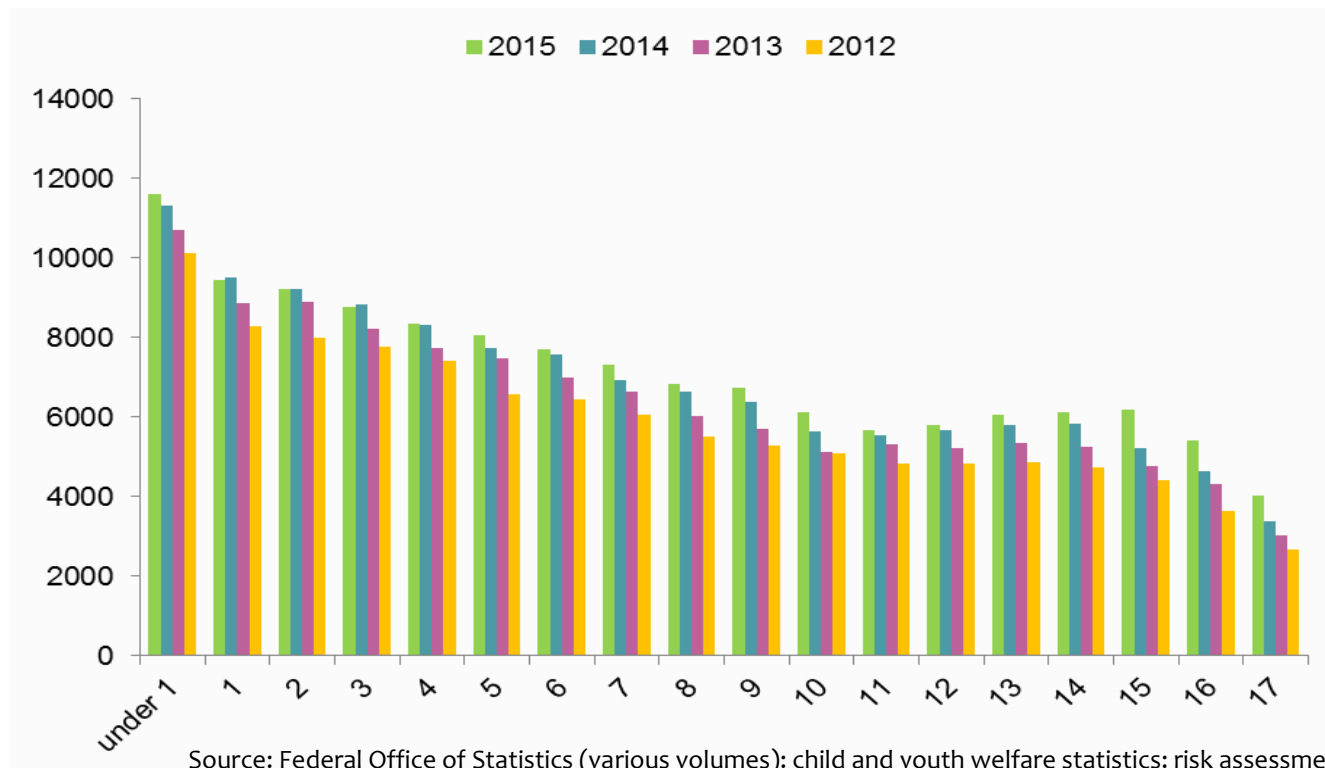
97 risk assessments per 10,000 of the population at the same age





➤ Age of the children concerned

diagram 1: risk assessments by age of the child concerned in the years (Germany 2012-2015, data: absolute numbers)



Source: Federal Office of Statistics (various volumes): child and youth welfare statistics: risk assessments under sec. 8a (1) Social Code Book VIII; collocation by the research association German Youth Institute (DJI)/Technical University (TU) Dortmund



➤ Notifiers of the potential risk



diagram 2: risk assessments sorted by notifiers (Germany 2015; data in %)



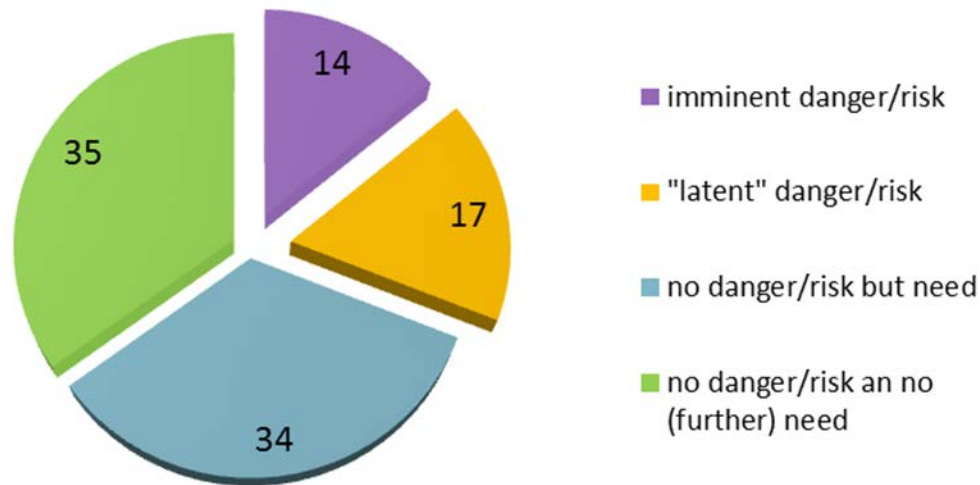
Source: Federal Office of Statistics (2015): child and youth welfare statistics: risk assessments under sec. 8a (1) Social Code Book VIII; collocation by the research association German Youth Institute (DJI)/Technical University (TU) Dortmund



➤ Outcomes of the risk assessments



diagram 3: risk assessments sorted by the outcome (Germany 2015, data in %)



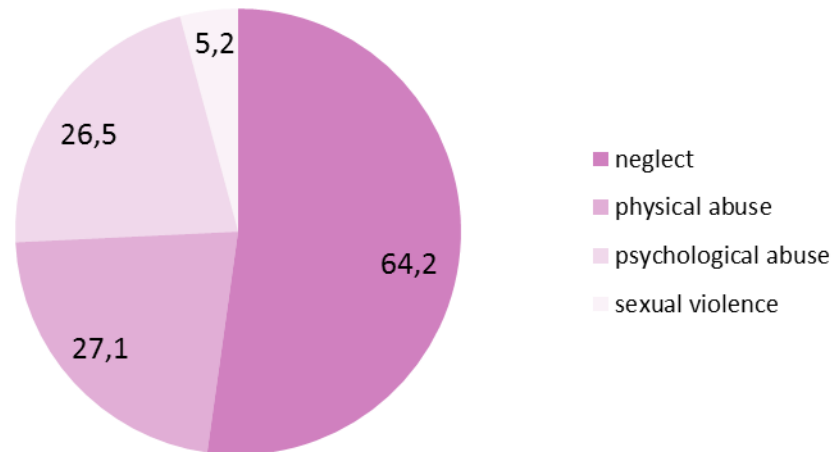
Source: Federal Office of Statistics (2015): child and youth welfare statistics: risk assessments under sec. 8a (1) Social Code Book VIII; collocation by the research association German Youth Institute (DJI)/Technical University (TU) Dortmund





➤ Form of maltreatment

diagram 4: Imminent child endangerment/risk of harm sorted by form of maltreatment (Germany 2015; n=20.806; data in %)

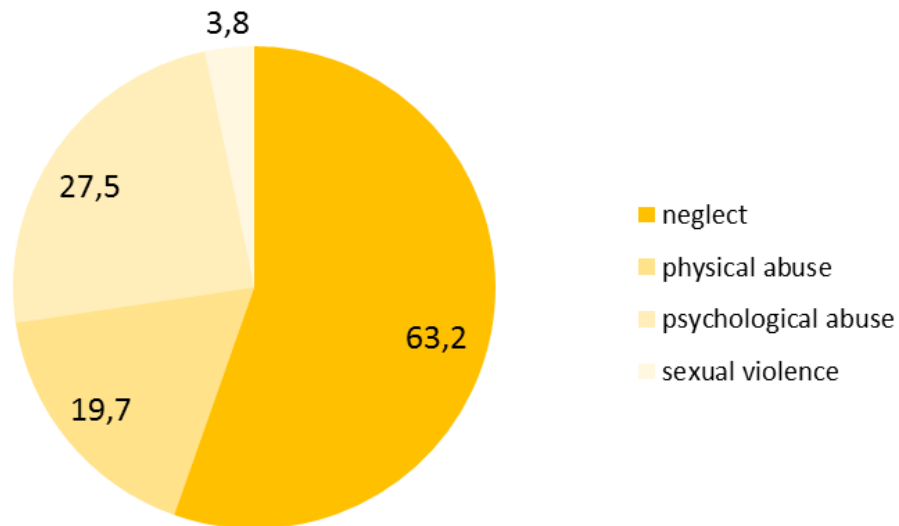


Source: Federal Office of Statistics (2015): child and youth welfare statistics: risk assessments under sec. 8a (1) Social Code Book VIII; collocation by the research association German Youth Institute (DJI)/Technical University (TU) Dortmund





diagram 5: “Latent” child endangerment/risk of harm sorted by form of maltreatment (Germany 2015; n=24.188; data in %)



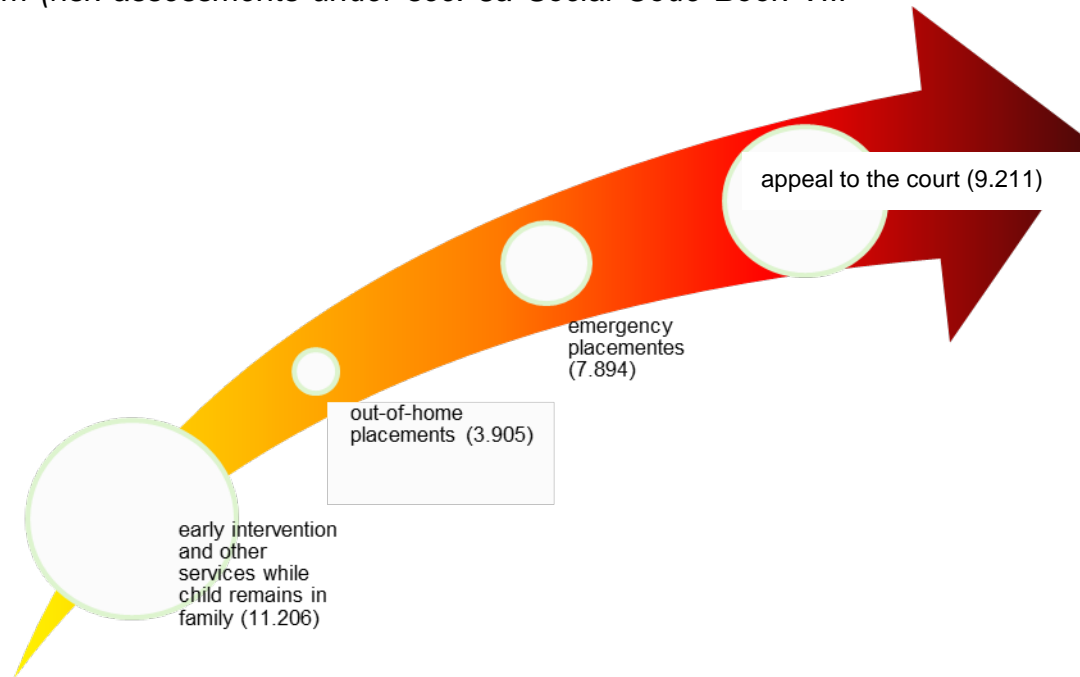
Source: Federal Office of Statistics (2015): child and youth welfare statistics: risk assessments under sec. 8a (1) Social Code Book VIII; collocation by the research association German Youth Institute (DJI)/Technical University (TU) Dortmund





➤ Support services following

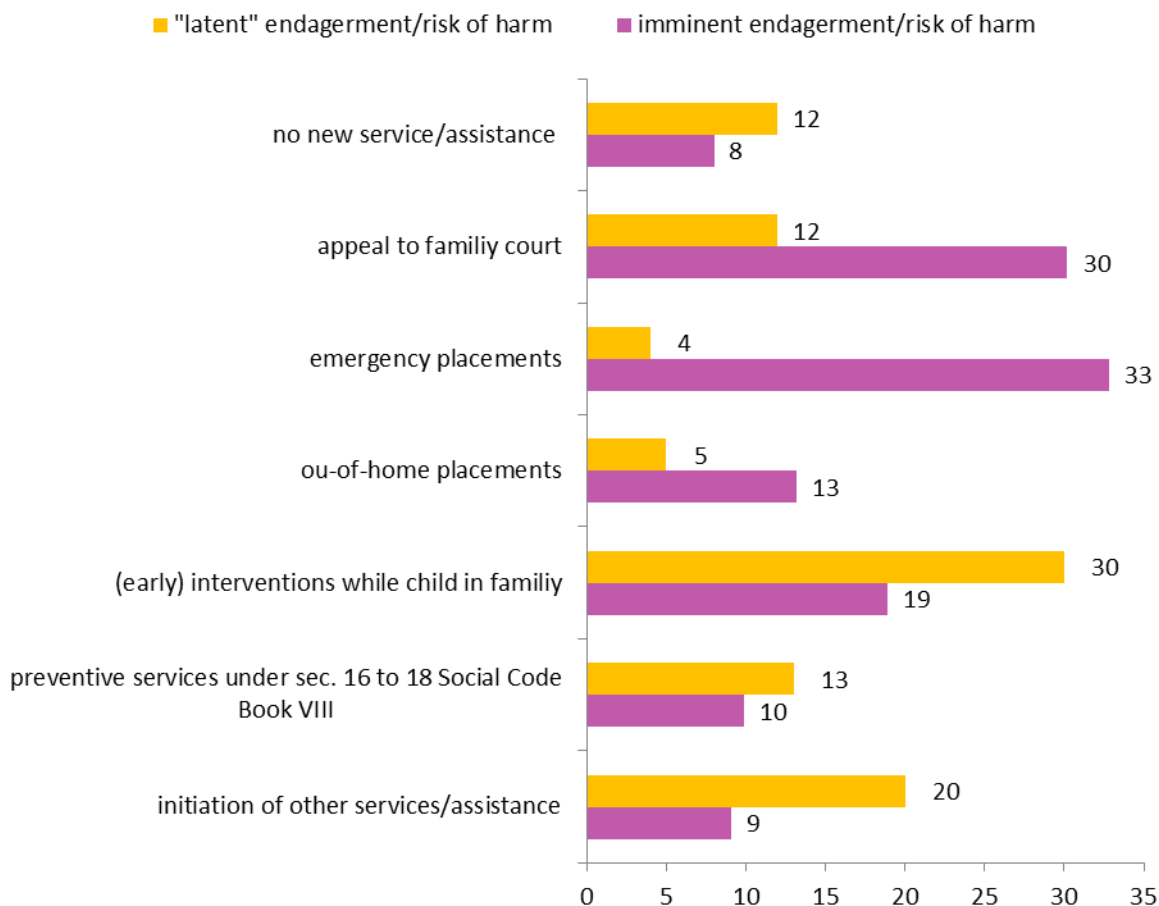
diagram 6: protective measures by the state to prevent or end child endangerment/risk of harm (risk assessments under sec. 8a Social Code Book VIII 2015; data absolute)



Source: Federal Office of Statistics (2015): child and youth welfare statistics: risk assessments under sec. 8a (1) Social Code Book VIII; collocation by the research association German Youth Institute (DJI)/Technical University (TU) Dortmund



diagram 7: First provision of support services following a substantiated ("latent") child endangerment/risk of harm (Germany 2015; data in %)



Source: Federal Office of Statistics (2015): child and youth welfare statistics: risk assessments under sec. 8a (1) Social Code Book VIII; collocation by the research association German Youth Institute (DJI)/Technical University (TU) Dortmund





Thank you!

Dr. Jens Pothmann
Gudula Kaufhold



ifh.forschungsverbund.tu-dortmund.de



ifh Home: Daten zum gesunden und sicheren Aufwachsen von Kindern

ifh.forschungsverbund.tu-dortmund.de

Suchen

Feedback Weitere Links

Lebenslagen ▾ Kindergesundheit ▾ Angebote der Kinder- und Jugendhilfe ▾ Gewalt gegen Kinder ▾ Staatlicher Schutzauftrag ▾ Methodische Hinweise ▾



Daten zum gesunden und sicheren Aufwachsen von Kindern

Die Internetseite „Daten zum gesunden und sicheren Aufwachsen von Kindern“ stellt aus unterschiedlichen amtlichen Statistiken Grundaussagen und Analysen zu Lebenslagen und Gesundheit junger Kinder sowie zu staatlichen Unterstützungsangeboten für deren Familien, aber auch zum Umfang von Gewalt und erfolgten Schutzmaßnahmen zusammen. Dabei werden nur solche Quellen berücksichtigt, die regelmäßig, flächendeckend und über die jeweilige ganze Grundgesamtheit Daten erheben.

Die Erstellung der Seite erfolgt im Rahmen eines [Projektes zur Entwicklung eines Indikatorenmodells Frühe Hilfen](#). Das Projekt wird vom Nationalen Zentrum Frühe Hilfen (NZFH) aus Mitteln der Bundesinitiative Frühe Hilfen des Bundesministeriums für Familie, Senioren, Frauen und Jugend (BMFSFJ) gefördert. Es ist geplant, die hier veröffentlichten Daten sukzessive zu erweitern und diese zu einem Indikatorenset für ein regelmäßiges Monitoring der Frühen Hilfen weiterzuentwickeln.

Forschung tu+di

Deutsches Jugendinstitut Technische Universität Dortmund

Icons: Person, List, Search





Wechselseitige Unterstützung und Austausch im Forschungsalltag

Beispiele

- Kinderbetreuung vor Ort – Der Betreuungs-atlas 2013

